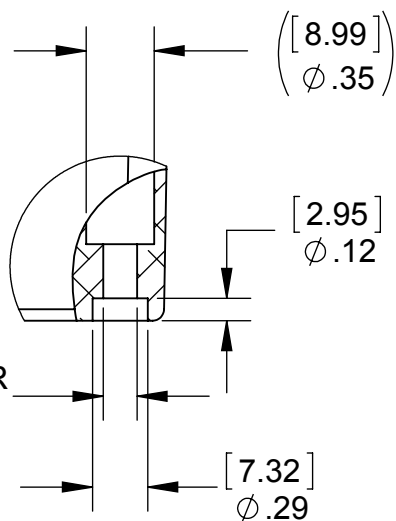
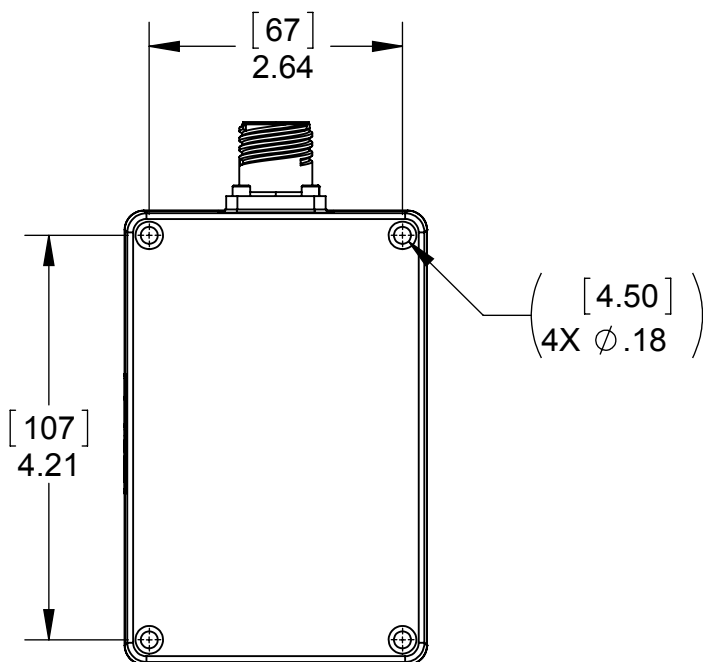
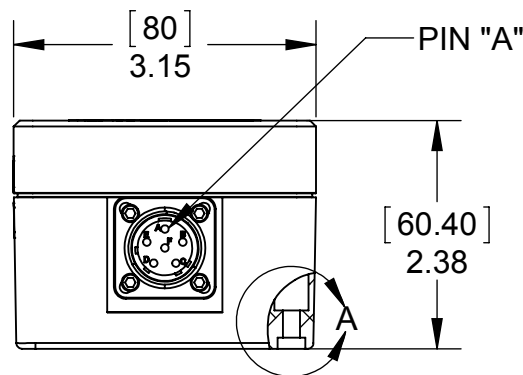
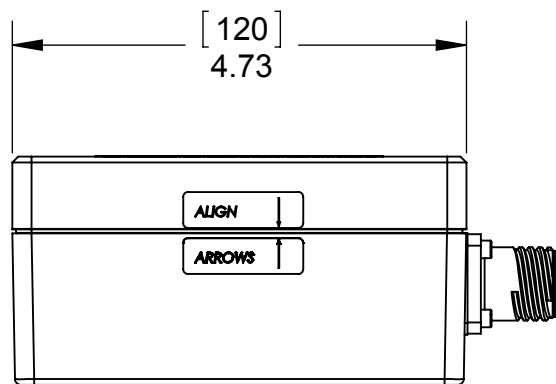
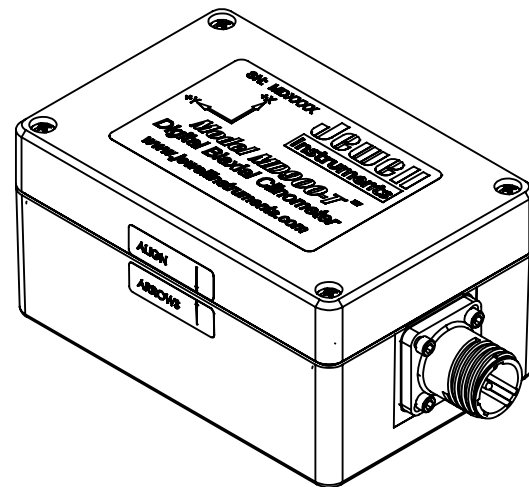


TO MOUNT UNIT:  
LOOSEN FOUR (4) SCREWS, REMOVE COVER TO  
EXPOSE FOUR MOUNTING HOLES  
SEE DETAIL A




CLEARANCE HOLE FOR  
#8 OR M4 SCREW

DETAIL A  
SCALE 1 : 1

TYP. 4 PLCS.

#### NOTES:

- DIMENSIONS: [mm]  
in
- UNIT ASSEMBLED & CALIBRATED PER AD98900-26, RM-98900-26 & B-03-1002.  
ONCE COMPLETE, THE UNIT IS "NULLED" PER ES -79145.
- CONNECTOR: D38999/20WB98PN  
CONNECTOR MATE: D38999/26WB98SN OR EQ.
- UNIT SPECIFICATIONS:  
RANGE:  $\pm 10^\circ$   
OUTPUT: RS422 FULL DUPLEX  
CUSTOMER P/N: MD900-T-LMCO  
DESCRIPTION: MODEL MD900-T-LMCO, BIAXIAL CLINOMETER,  
WITH SPECIAL EMI ENCLOSURE

APPLICATION		DIMENSIONS ARE IN INCHES AND APPLY TO PART BEFORE FINISHING		<div></div> <div>MANCHESTER, NH</div> <div>TRIPLETT MODUTEC A&amp;M EMICO</div> <div>PROPRIETARY NOTICE</div> <div>THIS DRAWING IS THE PROPERTY OF JEWELL INSTRUMENTS, LLC. NEITHER THIS DOCUMENT NOR THE DATA CONTAINED HEREIN SHALL BE DISCLOSED, REPRODUCED IN WHOLE OR IN PART WITHOUT THE WRITTEN AUTHORIZATION OF JEWELL INSTRUMENTS, LLC. NO RIGHT IS GRANTED TO DISCLOSE OR SO USE ANY INFORMATION CONTAINED HEREIN. ALL RIGHTS RESERVED.</div>	TITLE	
USED ON	NEXT ASSY	TOLERANCE UNLESS SPECIFIED			MD900-T-LMCO OUTLINE DRAWING	
		TWO PLACE DECIMALS     (.00) ± .01 THREE PLACE DECIMALS (.000) ± .005 ANGLES                         ± 1° RAW MATL - COMMERCIAL STANDARD			DRAWING NO.	
MATERIAL					OD98900-26	
FINISH					SCALE	CAGE CODE
					1:2	33005
				SHEET 1 OF 1		